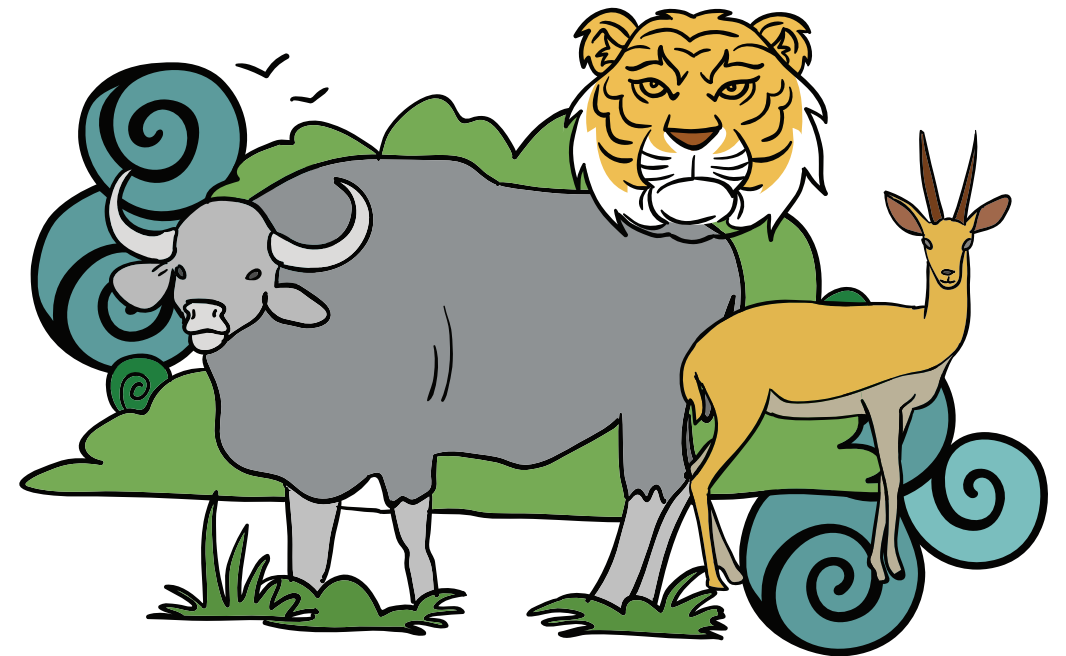


Locales in this category have hosted shoots of prominent films such as **Bagh aur Main,**
Ajooba,
Coolie,
Amar Akbar Anthony,
and **Ishq Forever**
besides several ad films

Forests Wildlife

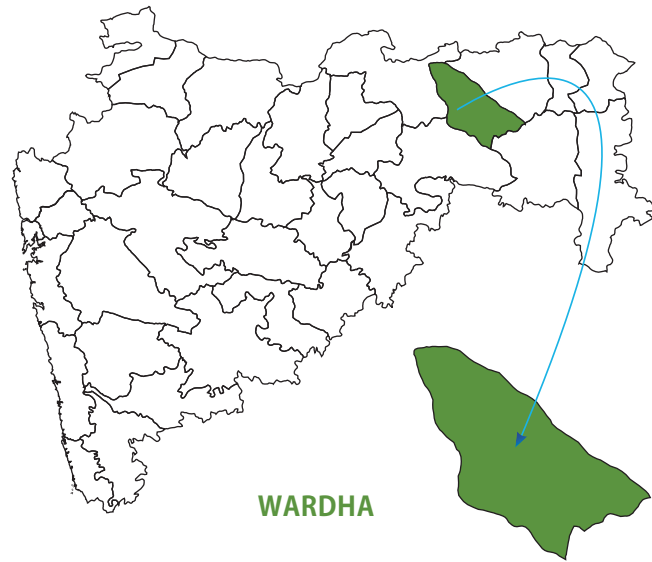




BOR WILDLIFE SANCTUARY – THE TIGER’S DEN

Bor Wildlife Sanctuary covers an area of 61.10 sq km and includes 3,237 hectares of reserve forest, 2,213 hectares of protected forest and 660 hectares of unclassified forest. The sanctuary is covered with southern mixed dry deciduous forest.

The Government has plans to merge the sanctuary with adjacent protected areas, which will eventually double the area of the tiger reserve. The sanctuary has a number of shrines such as a Shiva temple at Khori-Khapa, Bruhaspati Temple at Chauki, Hanuman Temple at Khadki and Ganesh Temple at Kelzar.



LOCATION FACT FILE

- Bor Wildlife Sanctuary is adjacent to Hingni, a large village in Wardha district. Hingni has a population of ~5,416.
- It has an average maximum temperature of 44 degree Celsius and a minimum of 13 degree Celsius.
- It is connected by rail (Wardha, 35 km), air (Nagpur, 80 km) and road (Mumbai, 771 km; Pune, 662 km).
- Nearby attractions include Bor Dam, Sewagram–Bapu Kuti, Laxmi Narayana Mandir, Gita Mandir and Nagpur.
- Several star category hotels and resorts are available in Nagpur, 80 km away from the sanctuary. MTDC also has a small resort in the region.
- Restaurants and catering facilities are easily available in Wardha city.
- Support infrastructure in terms of pre- and post-production equipment, artistes, technicians, etc. can be sourced from Kolhapur/Mumbai/Pune.
- The nearest city to avail medical facilities is Wardha.
- April to May is the best time to visit. The sanctuary remains closed on Mondays.

PERMISSION AND FEE DETAILS

AUTHORITY

Forest Department

CONTACT DETAILS

Chief Conservator Of Forests & Field Director
 Pench Tiger Project, Zero Mile, Civil Lines
 Nagpur, Maharashtra – 440001
 Tel: +91-712-2560727
 Telefax: +91-712-2560748
 E-mail: ccffdpench2@mahaforest.gov.in

FEE (INR)

INR 30,000 per day is charged and permission is provided only for educational and wildlife research

AUTHORITY

District Collector, Wardha

CONTACT DETAILS

District Collector
 Collector Office, Civil Lines
 Wardha, Maharashtra – 442001
 Tel: +91-7152-240102
 E-mail: rdc.da.war-mh@nic.in

FEE (INR)

Fee is decided on a case to case basis

AUTHORITY

Police Department

CONTACT DETAILS

Police Inspector
 Seloo Taluka Police Station, Seloo
 Wardha District, Maharashtra – 442104
 Tel: +91-7155-220233
 E-mail: ps.seloo@mahapolice.gov.in
 Web: wardhapolice.gov.in

FEE (INR)

Police protection charges as applicable, depending on the number of personnel deployed

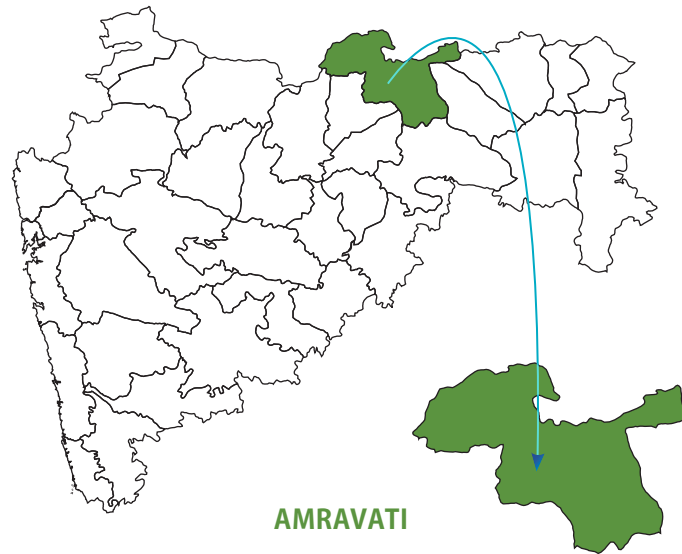




MELGHAT TIGER RESERVE – TIGER HAVEN

Melghat was among the first nine tiger reserves to be notified in 1973-74 under the prestigious Project Tiger movement. It is located in the south-western Satpura mountain range, where Maharashtra meets Madhya Pradesh. Spread over 3,600 sq km, the reserve encompasses the Gugamal National Park, the Melghat Wildlife Sanctuary and the neighbouring deciduous reserve forest.

Extensive hill forests, thick undergrowth and moss-covered trees underscore its virgin confines. Most tourists combine their Melghat visit with a stay in the beautiful hill station of Chikhaldara – from where one can trek to the imposing Gawilgurh Fort and reach some spectacular waterfalls.



LOCATION FACT FILE

- Melghat Tiger Reserve is near Amravati city in Amravati district. Amravati city a population of ~64,7057.
- The average maximum temperature is 44 degree Celsius and minimum is 13 degree Celsius.
- It is connected by rail (Amravati, 110 km), air (Nagpur, 235 km) and road (Mumbai, 640 km; Pune, 562 km).
- Nearby attractions include Chikhaldara and Gawilgurh Fort.
- Resorts and hotels are available at the reserve and in Chikhaldara, which is ~2 hours' drive away. Maharashtra Tourism Development Corporation (MTDC) also has a resort at Mozari Point, ~20 km away from the reserve.
- The resorts and hotels have dedicated restaurants in their premises.
- Catering facilities are available in the Chikhaldara region.
- Support infrastructure in terms of pre- and post-production equipment, artistes, technicians, etc. can be sourced from Mumbai.
- Medical facilities are available in Amravati and Chikhaldara cities.
- The best season to visit Melghat is between December and May. In summer, the forests are thin and visibility is good.

PERMISSION AND FEE DETAILS

AUTHORITY

Office Of Chief Conservator Of Forests And Field Director
Melghat Tiger Reserve

CONTACT DETAILS

Chief Conservator Of Forests & Field Director
Camp Amravati, Amravati District
Maharashtra – 444 602
Tel: +91-721-2662792
Telefax: +91-721-2551766
E-mail: projecttigermelghat@gmail.com
Web: www.melghattiger.gov.in

FEE (INR)

Fee is decided on a case to case basis

AUTHORITY

District Collector

CONTACT DETAILS

Collector, Amravati District
Collector Office Camp
Amravati District, Maharashtra – 444602
Tel: +91-721-2662522
Mobile: +91-95278-28282
Web: www.Amravati.nic.in

FEE (INR)

Fee is decided on a case to case basis

AUTHORITY

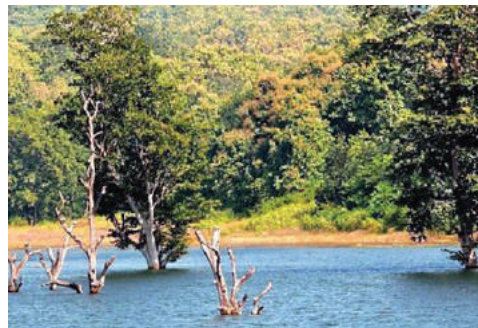
Police Department

CONTACT DETAILS

Police Inspector, Chikhaldara
Police Station, Chikhaldara, Maharashtra – 444807
Tel: +91-7220-230233
Mobile: +91 99238-79158
Web: www.amravatiruralpolice.in/policestation.html

FEE (INR)

Police protection charges as applicable, depending on the number of personnel deployed

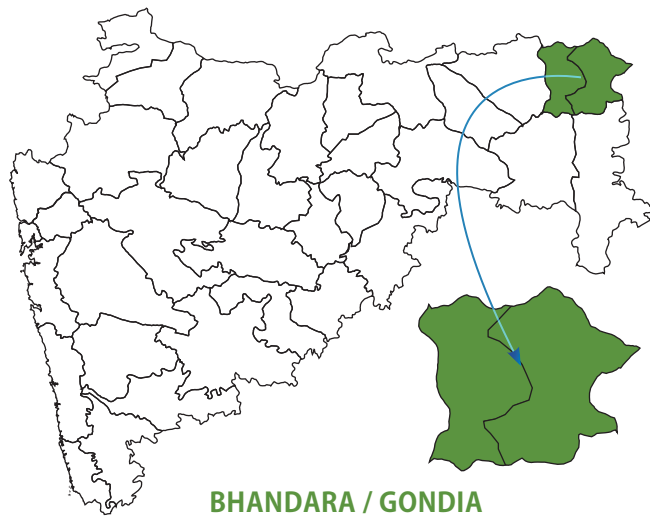




NAGZIRA WILDLIFE SANCTUARY – GREEN OASIS

A small wildlife sanctuary in the north-eastern corner of Maharashtra, Nagzira covers an area of 152 sq km. Nestled in the Vidarbha mountain range, it is often referred to as the green oasis. Its rocky and undulating terrain is covered with thick teak forests that support healthy populations of some of India's most endangered flora and fauna.

Sighting of animals such as Bengal tiger, common leopard, jungle cat, mouse deer, Indian gaur, sloth bear, four-horned antelope and the spotted hyena is common. The sanctuary is home to more than 166 bird species such as storks, barbets, hornbills, pitas, shrikes, flycatchers, cormorants, egrets, etc. It forms the catchment area of several lakes in the region such as Nagzira, Thadezari and Chirkhamara which support several types of freshwater fish and attract migratory water birds.



LOCATION FACT FILE

- Nagzira Wildlife Sanctuary is adjacent to Thadezari village (between Bhandara and Gondia districts of Maharashtra). Thadezari village has a population of ~397.
- The average maximum temperature is 44 degree Celsius and minimum is 13 degree Celsius.
- The sanctuary is connected by rail (Gondia railway station, 45 km), air (Nagpur, 120 km) and road (Mumbai, 950 km; Pune, 850 km).
- Nearby attractions are Navegaon National Park, Ittadoh Dam, Tibetan Camp, Pratapgad, etc.
- Resorts and hotels inside the sanctuary are limited. In nearby Bhandara there are a few hotels which have dedicated restaurants within their premises. Independent restaurant options are limited.
- A few catering facilities are available in nearby Gondia.
- The best time to visit is from October-February and March-June. The park remains closed for visitors during monsoons – from the end of June to mid-October.
- Medical facilities are available in Gondia.
- Support infrastructure in terms of pre- and post-production equipment, artistes, technicians, etc. can be sourced from Mumbai/Pune.

PERMISSION AND FEE DETAILS

AUTHORITY

Office Of Principal Chief Conservator of Forests (Wildlife)
M. S. Nagpur

CONTACT DETAILS

Principal Chief Conservator Of Forests (Wildlife)
M. S. Nagpur

3rd Floor, Van Bhavan, Ram Giri Road
Civil Lines, Nagpur, Maharashtra – 440 001
Tel: +91-712-2549563

Telefax: +91-712-2553018

E-mail: pccfwhnpg@gmail.com

pccfwhnpg@mahaforest.gov.in

Web: www.mahaforest.nic.in

FEE (INR)

Fee is decided on a case to case basis

AUTHORITY

Police Department

CONTACT DETAILS

Arjuni Mor Police Inspector

Arjuni Mor Police Station, Sadak Arjuni Taluka

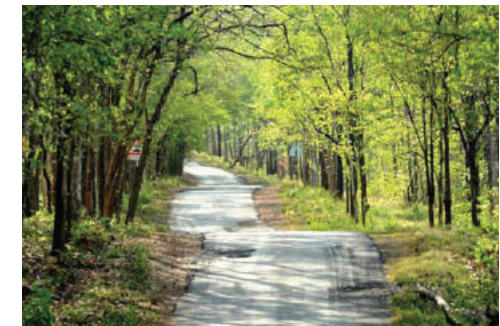
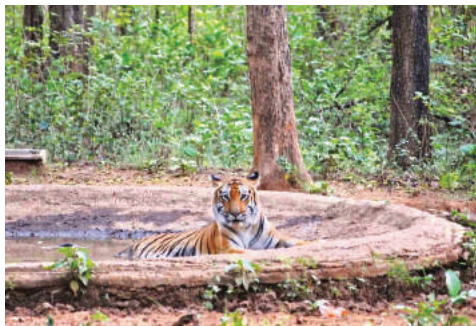
Gondia District, Maharashtra – 441807

Tel: +91-7196-220137

Web: www.gondiapolice.co.in

FEE (INR)

Police protection charges as applicable, depending on the number of personnel deployed



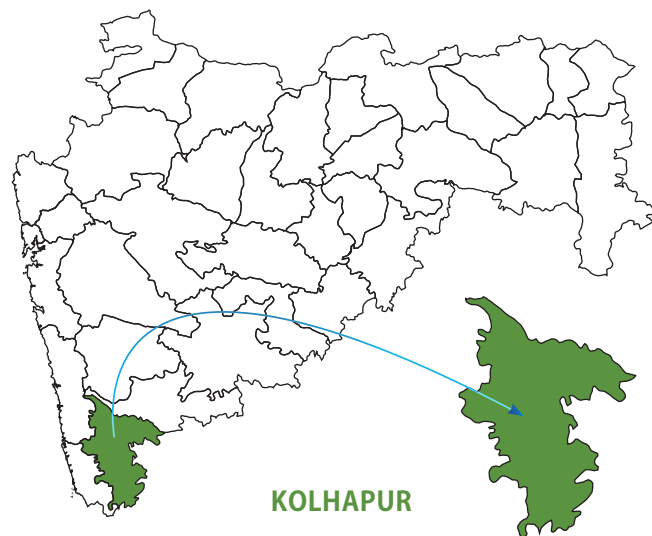


RADHANAGARI WILDLIFE SANCTUARY – NATURAL WORLD HERITAGE SITE

Radhanagari Wildlife Sanctuary is spread over an area of around 351.16 sq km between two chief reservoirs – Laxmi Sagar and Shahu Sagar. Very rich in natural vegetation, the sanctuary has over 425 species of plants and is thus very valuable from the point of biodiversity.

The Indian bison, of which there are over 600, is the chief attraction of the sanctuary and the reason why it is sometimes referred to as Bison Sanctuary.

Radhanagari is picked out for special mention when it comes to conservation and protection of birds. It houses the endangered Nilgiri wood pigeon besides other local and exotic birds. It is also a preferred destination for several migratory birds during winter.



LOCATION FACT FILE

- Radhanagari is a large village in Kolhapur district and has a population of ~6,197.
- The average maximum temperature is 34 degree Celsius and minimum is 18 degree Celsius.
- It is connected via rail (Kolhapur, 55 km), air (Pune, 250 km) and road (Mumbai-Kolhapur, 439 km; Pune-Kolhapur, 296 km).
- Nearby attractions include Sargeshwar Sanctuary, Kopeswar Temple, Kolhapur Town Hall and New Palace.
- Star and budget category hotel options are available in Kolhapur city. Radhanagari also has budget hotels with decent facilities.
- Restaurants and catering facilities are easily available in Kolhapur city.
- Medical facilities are available in Kolhapur city.
- Support infrastructure in terms of pre- and post-production equipment, artistes, technicians, etc. are available in Kolhapur city as most Marathi films are shot here.
- Kolhapur boasts of a film city which can provide necessary infrastructure.

PERMISSION AND FEE DETAILS

AUTHORITY

Forest Department (Wildlife)

CONTACT DETAILS

Chief Conservator Of Forests & Field Director
 Radhanagari Wildlife Sanctuary, New Ambani Temple
 Main Road, Radhanagari, Maharashtra – 416212
 Tel: +91-231-2542766

FEE (INR)

INR 30,000 per day is charged for educational and wildlife research. No film shooting is allowed in the sanctuary.

AUTHORITY

District Collector

CONTACT DETAILS

Collector & District Magistrate, Kolhapur
 Collectorate Kolhapur, Swarajya Bhavan, Nagala Park
 Kolhapur, Maharashtra – 416003
 Tel: +91-231-2656006

FEE (INR)

Fee is decided on a case to case basis

AUTHORITY

Police Department

CONTACT DETAILS

Commissioner Of Police
 Superintendent Of Police, Bawada Road
 Kolhapur, Maharashtra – 416003
 Tel: +91-231-2653960
 Mobile: +91-72180-38585 / 95523-28383
 E-mail: sp.kolhapur@mahapolice.gov.in

FEE (INR)

Police protection charges as applicable, depending on the number of personnel deployed



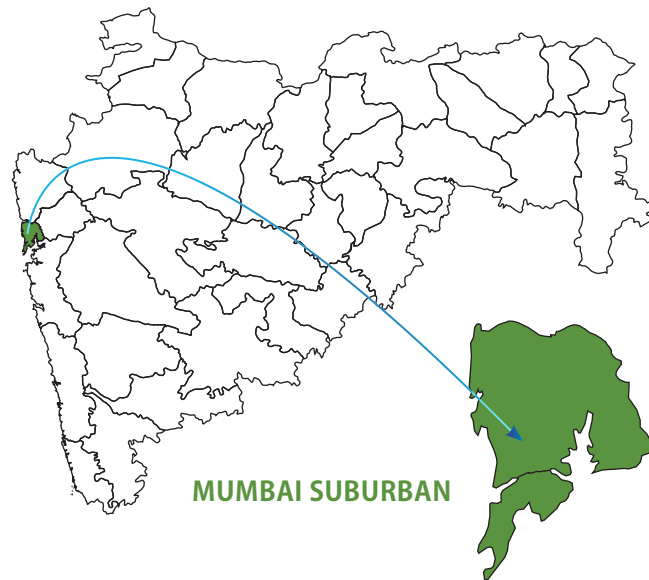


SANJAY GANDHI NATIONAL PARK – WILDERNESS IN THE CITY

Sanjay Gandhi National Park (SGNP), also known as the Borivali National Park, is a large protected area spread over ~104 sq km. The park area has a history that dates back to 4th century BCE (Before Common Era), when it was part of the land route between the two ports of Sopara and Kalyan. In pre-Independence era, the park had a land area of 2,0.26 sq km and was called the Krishnagiri National Park.

Sanjay Gandhi National Park is part of the Western Ghats biodiversity zone, forming roughly 20 per cent of Mumbai's geographical area. It is home to more than 274 species of birds, 35 species of mammals, 78 species of reptiles and amphibians, 170 species of butterflies and over a staggering 1,300 species of plants.

The park provides excellent views of valleys, hills and open expanses which are ideal for film shooting. Key attractions include a mini train, lakes, Kanheri Caves, gardens, Gandhi Smarak and boating facilities.



LOCATION FACT FILE

- SGNP is located in Borivali (East) in Mumbai Suburban district and is surrounded by a population of ~20,000,000.
- The average high temperature is 34 degree Celsius and a minimum of 18 degree Celsius.
- Mumbai is well connected by road, rail and air and SNGP is easily accessible by local transport. Borivali is the nearest local rail station.
- Nearby attractions include Kanheri Caves, Jogeshwari Caves and more.
- Several star and budget category hotels are available in Mumbai, even in the Borivali area.
- Mumbai being the hub of Indian cinema has ample support infrastructure in terms of pre- and post-production equipment, artistes, technicians, etc.
- Shooting is allowed only in the tourism zone and not the core forest area.
- Due to high tourist footfall during weekends, filming is not encouraged on Saturdays and Sundays.
- Application form for permission to shoot is available online at www.sgnp.maharashtra.gov.in
- Movies such as *Coolie*, *Amar Akbar Anthony* and *Ishq Forever* besides several ad films have been shot here.

PERMISSION AND FEE DETAILS

AUTHORITY

Sanjay Gandhi National Park

CONTACT DETAILS

Chief Conservator Of Forests & Director

Sanjay Gandhi National Park, Borivali (East),

Mumbai, Maharashtra – 400066

Tel: +91-22-28860362

E-mail: sgnpmumbai@gmail.com

Web: www.sgnp.maharashtra.gov.in

FEE (INR)

Deposit	INR	10,000
Simple Shoot	INR	27,940
Mini Train	INR	52,090
Lion/ Tiger Cage	INR	46,300
Nursery, Gandhi Temple	INR	27,490
Video Camera (Commercial)	INR	7,670
Still Photography	INR	1,150

*Prices mentioned above is for shooting between sunrise and sunset

AUTHORITY

Police Department

CONTACT DETAILS

Senior Police Inspector, Theatre Branch

Desk 10, Police Commissioner's Office, Dr D N Road

Fort, Opposite Crawford Market

Mumbai, Maharashtra – 400001

Tel: +91-22-22620111

Web: www.mumbai.police.maharashtra.gov.in

FEE (INR)

Police protection charges as applicable, depending on the number of personnel deployed

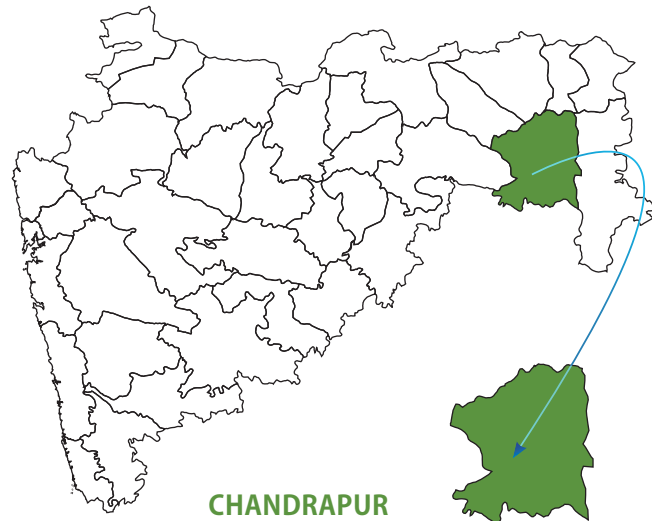




TADOBA WILDLIFE SANCTUARY – THE JEWEL OF VIDARBHA

Tadoba-Andhari Tiger Reserve is one of the oldest national parks in Maharashtra and was declared a Project Tiger Reserve in 1993. The total area of the reserve is 625.4 sq km which includes Tadoba National Park (116.55 sq km) and Andhari Wildlife Sanctuary (508.85 sq km). The reserve also includes 32.51 sq km of protected forests and 14.93 sq km of other areas.

Tadoba Wildlife Sanctuary is home to animals such as tigers, leopards, sloth bears, hyenas, jackals, wild dogs, blue bulls and sambars. The park features thick teak forests and a beautiful lake.



LOCATION FACT FILE

- The sanctuary is located near Chandrapur city in Chandrapur district. Chandrapur city has a population of ~3,21,036.
- The average maximum temperature is 44 degree Celsius and minimum is 13 degree Celsius.
- The sanctuary is connected by rail (Chandrapur, 30 km), air (Nagpur, 186 km) and road (Mumbai, 856 km; Pune, 748 km).
- Markanda Mandir and Nagpur are nearby attractions.
- Several star and budget category hotels/resorts are available in the region. An MTDC resort is also located at the edge of the reserve.
- Restaurants and catering facilities are available in Chandrapur city.
- Medical facilities are also available in Chandrapur city.
- Support infrastructure in terms of pre- and post-production equipment, artistes, technicians, etc. can be sourced from Mumbai/Pune.
- Films such as *Bagh aur Main* and *Ajooba* were shot here.

PERMISSION AND FEE DETAILS

AUTHORITY
Office Of Field Director & Chief Conservator Of Forests

CONTACT DETAILS
Field Director & Chief Conservator Of Forests
Tadoba-Andhari Tiger Reserve
Tadoba-Andhari Tiger Reserve, Mul Road
Chandrapur, Maharashtra – 442401
Tel: +91-7172-251414
E-mail: cffdtadoba@mahaforest.gov.in

FEE (INR)
INR 30,000 per day is charged and permission is only provided for educational and wildlife research

AUTHORITY
District Collector

CONTACT DETAILS
District Collector, Chandrapur
Collector Office, Chandrapur, Maharashtra – 442401
Tel: +91-7172-255300 / 255200
E-mail: collector.chandrapur@maharashtra.gov.in

FEE (INR)
Fee is decided on a case to case basis

AUTHORITY
Police Department

CONTACT DETAILS
Commissioner Of Police
Chandrapur District Police
Chandrapur, Maharashtra – 442401
Tel: +91-7172-255100
Telefax: +91-7172-255800
E-mail: sp.chandrapur@mahapolice.gov.in
sp.chandrapur@gmail.com

FEE (INR)
Police protection charges as applicable, depending on the number of personnel deployed

